

# Orchid

*Dairy*

## **Herd Management Information System**

Orchid Data Systems Ltd  
7 Darwin House  
Corbygate Business Park  
Corby  
Northants  
NN17 5JG  
U.K.

Tel: +44 (0)1536 443400  
Email: [info@orchid-data.co.uk](mailto:info@orchid-data.co.uk)  
Web: [www.orchid-data.co.uk](http://www.orchid-data.co.uk)



## **Contents**

Introduction .....	1
The <i>Complete</i> System.....	2
Installation.....	3
Quick Tour of the Orchid Main Screens.....	4
Key Functions and Features.....	7
Subscribing to Orchid Dairy.....	18
What To Do Next.....	19
Licencing Orchid Dairy .....	20



Over the last 20 years Orchid has developed the UK's fastest selling livestock management package and is currently responsible for the management information for nearly a quarter of a million cattle.



#### Simple to Use

- Our approach is to keep things simple with clear options that allow you to select and move on.
- 95% of operations are carried out with simple mouse-clicks on buttons
- The program is "intelligent" and will automatically notify of data entry errors



#### Industry Standard.

Our software has been selected by several leading Agricultural Colleges and Consultancies, including SAC



#### Universal Acceptance.

Orchid integrates seamlessly with third parties including DEFRA, breed societies, milking parlour manufacturers and milk recording agencies.

***Thank you for requesting the Orchid Dairy Trial Pack.***

***We hope that it will prove interesting and informative as you evaluate our Service.***

### How to use the Orchid Trial Pack

The pack is comprised of a full working version of the Orchid Dairy software and this brochure. The brochure has been designed as a companion to help you first install the software and then demonstrate some of the key features. You are also encouraged to make use of the Tutorials and Help File, which will help you explore the program beyond the scope of this brochure.

Please keep the brochure in a safe place - it will be useful when you start using Orchid Dairy with your own herd data.

During installation of the program you will be prompted for a data source. It is recommended that you select the option for "**Dairy Sample Data**". This is herd data taken from a working farm and therefore promotes better understanding of how the Orchid software can work for you.

Once installed you will have 10 days unrestricted access to the software. Each time you open the program you will be shown how many days of the trial remain.

#### Remember:

***If you have any questions during your Orchid evaluation period please call the Orchid Sales Team on 01536 443400.***

---

## 2 Orchid Dairy: The Complete System



A single monthly subscription gives you a better deal:

- No large capital investment in software
- Always work with the latest version of the Orchid program
- Your own cattle data converted from other specific electronic formats
- Comprehensive on-line Tutorials
- Training available with an Orchid-certified trainer
- Unlike other software packages there are no other hidden charges. For example, you pay nothing extra for data fixing and maintenance

Orchid is the *Complete* System. Subscribing to Orchid Dairy doesn't just leave you with "software in a box".

### ***What's included in Orchid Dairy?***

#### **Initial data conversion**

To save you hours of initial data entry work, the Orchid Support team can import cattle data from a datastream file (CIS or NMR) or create herd data from the CTS "Cattle on holding" file. The latter is available to all registered cattle keepers by logging onto the CTS Web site ([www.bcms.gov.uk](http://www.bcms.gov.uk))

#### **Industry-leading software**

Under continuous development, Orchid Dairy has been designed to be as easy to use and understand as possible.

#### **Upgrades**

Regular software upgrades from Orchid keep the software in line with latest legislative requirements and management practices.

#### **Technical Support**

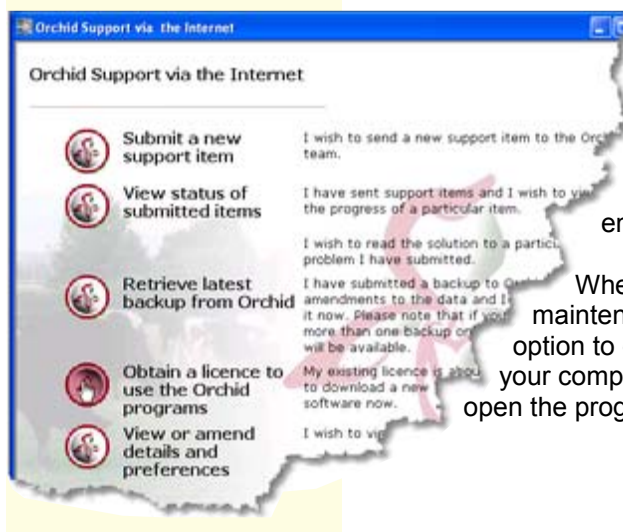
##### *via Telephone and Email*

The Orchid Technical Support telephone line is permanently manned within office hours, 9.00am to 5.00pm Monday to Friday.

Call 01536 443300. Email address [support@orchid-data.co.uk](mailto:support@orchid-data.co.uk)

##### *via the unique Orchid Internet Support System*

Your questions and data can be sent directly to the Orchid Central System via the Internet at any time.



It's your own personal communication channel with the Orchid Support team that's quick and easy to use.

There are no email messages involved. This saves the hassle of manually composing an email and attaching your herd data backup.

When the Orchid support team have carried out maintenance work on your herd database, there is an option to download the corrected data directly on to your computer's hard disk. After this all you need do is open the program and continue working.

### To install the Orchid software proceed as follows:

1 Ensure all programs are closed on the PC and insert the CD into your CD-ROM or DVD drive.

2 After a few seconds the CD should auto-run and display an introductory screen.

*Either:*

Click on the *Skip* button to go straight to the next menu

*Or:*

Wait for the main menu to appear after a few seconds

3 Click on the Orchid logo to begin and select the option "I want to install the Orchid Dairy Program" and then "Start installing the Orchid program".

4 The Installation Wizard will now launch. Follow the steps, accepting the default settings by clicking the *Next* button on each screen. Please note the default installation drive will be "C:" on your computer.

5 When you reach the "Ready to Install" screen, click *Next* again. The program will now install, which will take a minute or so.

6 The *Orchid Getting Started Wizard* will now display. You need to restore a herd data source:

- If you wish to view an established set of herd data (recommended), click the *Close* button on the Wizard and then download the dairy demonstration data file (AMS\_BACKUP.EXE) from the Orchid Website and save it to disk. Finally, double-click on the file to install.

If Orchid have sent your own converted data on a floppy diskette, select the option "I have an Orchid backup". Insert the diskette into the PC floppy disk drive and click *Next* and then *Finish* to proceed.



**Program Installing**



**Select your data source from the Getting Started Wizard**

#### TIP:

If the CD does not auto-run when you insert it into the computer's drive, use Windows® *My Computer* to browse the CD/DVD drive (usually drive letter D). Look for a file named "AMSetup" and double-click on it. This action will launch the main screen, as at step 2 above. If you are at all uncertain about how to proceed, please call the Orchid Technical Support line on 01536 443300 and one of the team will be ready to assist you.

## 4 Orchid Dairy: Quick Tour of the Main Screens

---

### Running the Orchid Software

The *Orchid Internet Support* program and the *Orchid Herd Management* program can be opened by double-clicking the appropriate icon from the Windows® Desktop.

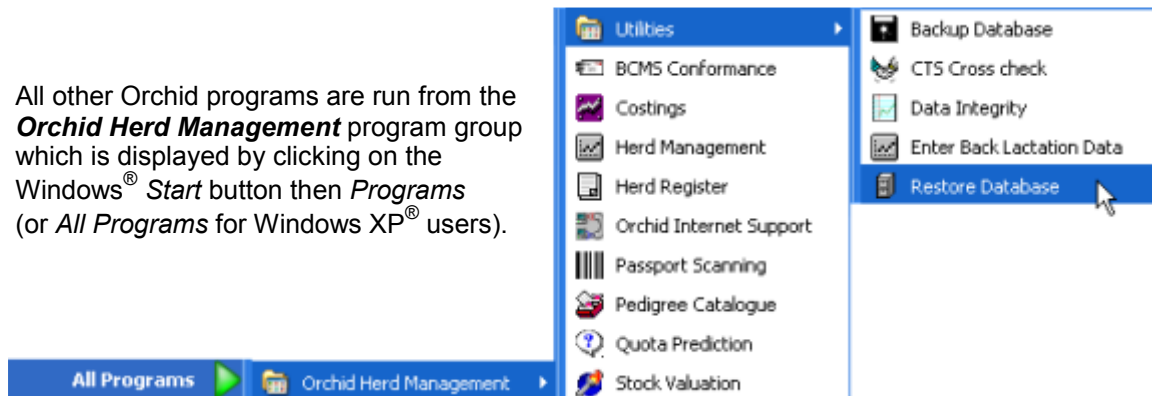
The *Herd Management* program is used to input and view all animal data and management reports.

The *Internet Support* program handles all online transactions with the Orchid Central System. This includes downloading a licence and sending *Support Items*. A *Support Item* is a communication between the farm computer operator and the Orchid Support team. For example, you can send a question or a copy of your data for maintenance. In order to use this program you will be issued with a personal user id and password to login to the system.



Desktop icons

All other Orchid programs are run from the **Orchid Herd Management** program group which is displayed by clicking on the Windows® Start button then *Programs* (or *All Programs* for Windows XP® users).



The Orchid Herd Management program group

The Orchid program group shows several other programs that are included in the standard *Dairy Starter Unit*. These include the following:

#### ◆ Utility Programs

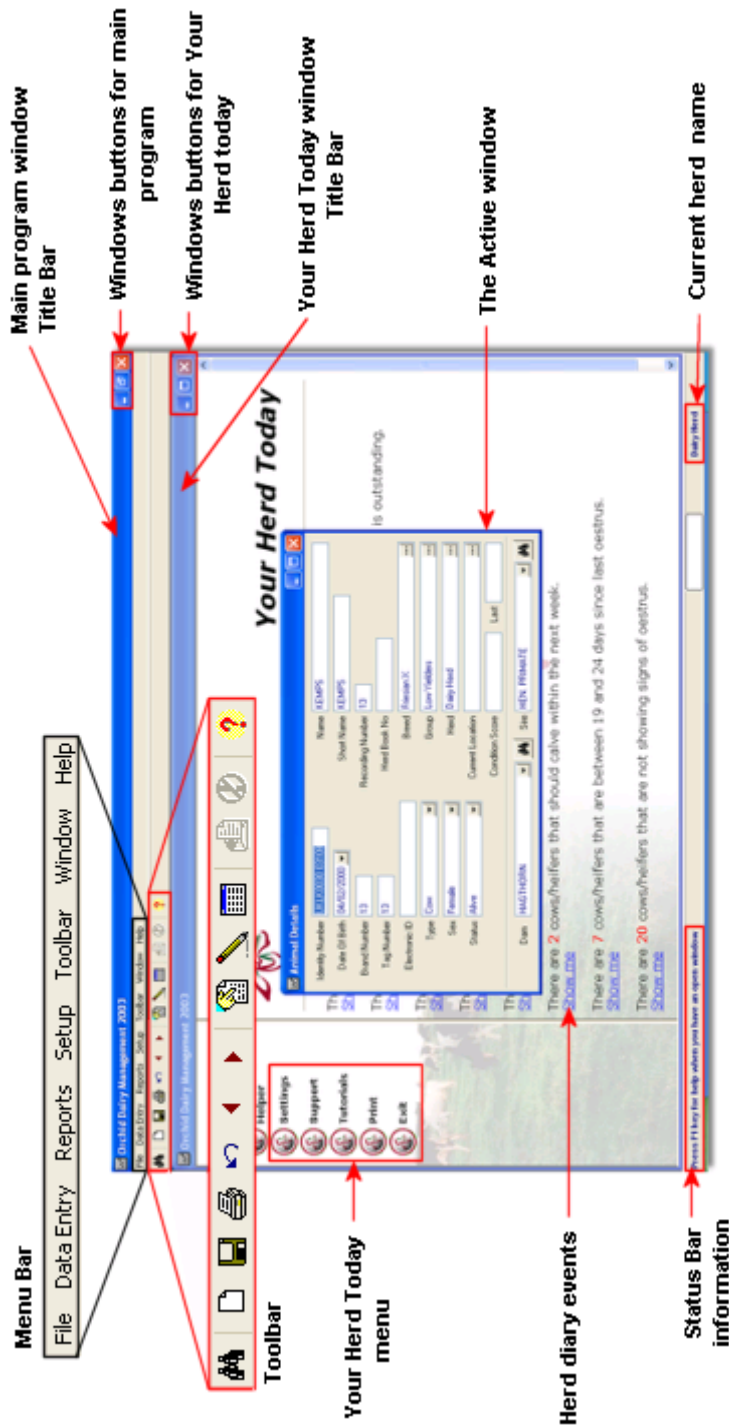
- Make a backup copy of the whole herd database to a single file for efficient storage.
- Restore a previous backup to your computer hard disk.
- Perform integrity checks on your herd data for cow calendar errors and database errors.
- Input historical lactation data for purchased cows.
- Cross-check your Orchid herd data with the BCMS “Cattle on Holding Summary” file, which is easily downloaded from the *CTS Online* web site.

#### ◆ Herd Register

- Produce a report which conforms to official DEFRA requirements.

#### ◆ Stock Valuation

- Produce a list of animals on farm for a defined date.



The main program window contains the workspace and all other windows. It also contains the Menu bar and the Toolbar.

When the program opens a second window displays by default. This window contains the Your Herd Today screens, which give you access to animal lists requiring attention under each event type. On the left side of the window is the Your Herd Today menu, which allows you to navigate the screens. The Your Herd Today window can be resized or closed using the standard Windows buttons in its Title bar.

Data Entry windows, Reports and Setup items are accessed via the Menu bar. These "Active" windows display within the program workspace and "float" over the top of the Your Herd Today window. The Toolbar allows various actions to be performed on the active window, for example, adding a new record. TIP: move your mouse pointer over each Toolbar button to view a description of its function.

The name of the current Herd displays on the right side of the Status bar at the bottom of the main window.

## 6 Orchid Dairy: Quick Tour of the Main Screens

---

### The *Your Herd Today* Menu

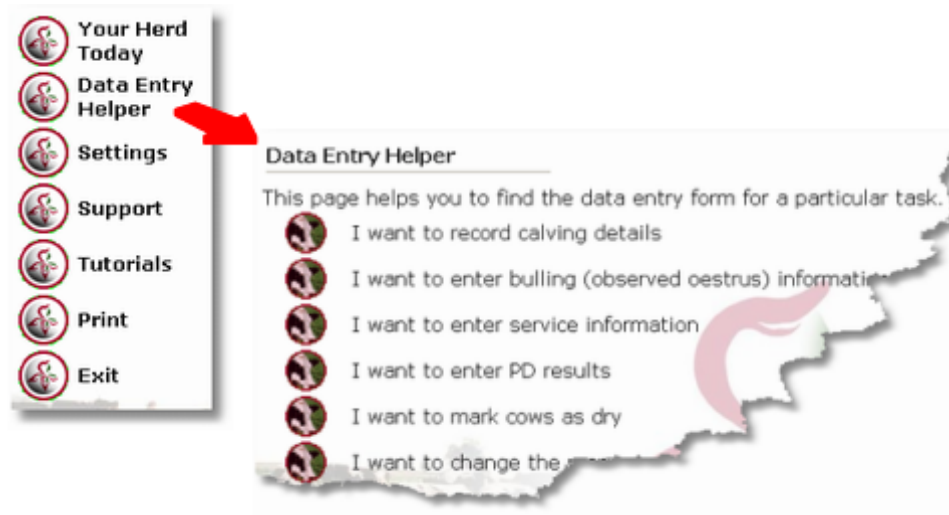
Included in the **Dairy Starter** Package

**Access:** automatically displays when the program runs

This menu displays on the left side of the main *Your Herd Today* screen. The menu options provide access to other screens like the *Data Entry Helper* screen, which is illustrated below. This screen is an ideal starting point for farm staff who are new to computers because it presents a list of tasks that link directly to the correct data entry screen.

You can also customise the information which displays on the screens by clicking the *Settings* button.

Program *Tutorials* can be viewed and printed; these provide step-by-step guidance, whilst you are learning the software.



**Accessing the *Data Entry Helper* screen**

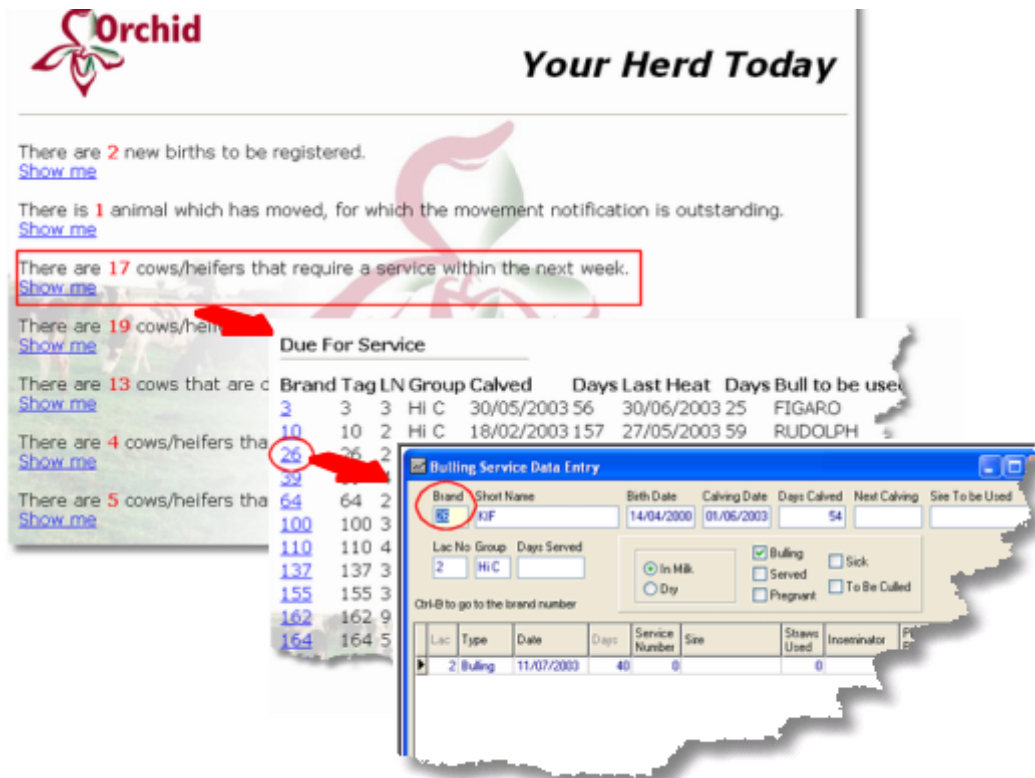
### Your Herd Today: Events and Action Lists

Included in the Dairy Starter Package

Access: automatically displays when the program runs

The main *Your Herd Today* screen helps you efficiently manage your herd day-to-day. When the *Herd Management* program is opened, an action list of animals is displayed under several headings. Each heading represents a farm event type such as “Due for Service” or “Passport Application required”.

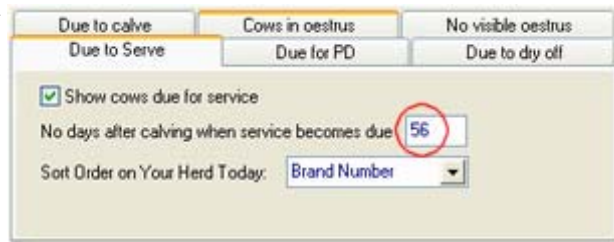
Clicking on the blue-coloured “Show me” text under each event type, displays the full list of animal identities. Next, simply click on the required brand number to open the relevant Data Entry screen. The illustration shown below shows how it only takes 2 mouse-clicks to record a service for a cow highlighted on *Your Herd Today*.



Entering a service record from the *Your Herd Today* screen

The *Settings* button on the *Your Herd Today* menu gives you the flexibility to customise how the information is presented.

The illustration opposite shows how the time of notification for each of the *Fertility Events* can be modified according to own style of management.



Customising *Fertility Event* reports

## 8 Orchid Dairy: Information on the Move

### Mobile Data Viewing and Entry

You need the **myHerd** Unit

The Orchid myHerd mobile solution enables you to view and record herd data on a Pocket PC while away from the office. New data recorded on the Pocket PC can be sent to the main Orchid Herd Management program via PC cable link or a wireless network.

#### Features

- Easy to use
- Record bulling events, services, PDs, dry-offs, calvings, with more to come...
- Fast access to summary breeding calendar for each cow
- View youngstock records
- Record data for more than one herd
- Supports multiple Pocket PCs in use at the same time

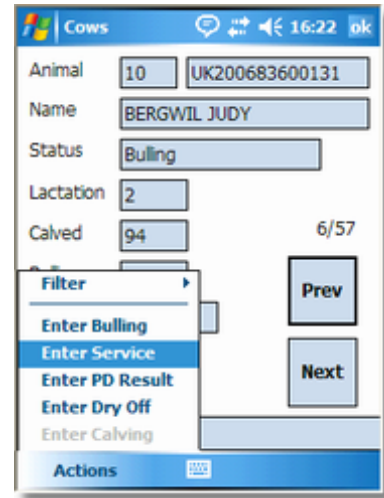
#### Benefits

- Save time - record events while on the move
- Improve accuracy of data recording
- Breeding events in Herd Management program always up to date - improve decision-making

Customer Joe Brandreth from Warwickshire recently told Orchid:

*"Quite often, after a long day outside, it is a chore to remember all the day's events, and then spend an hour or so entering them all into the computer. Now, thanks to myHerd, that time has been freed up."*

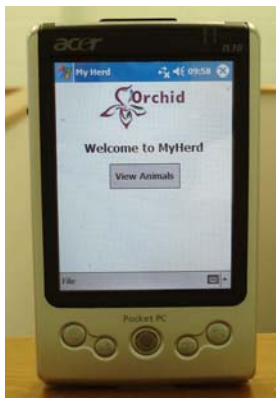
Synchronise your Pocket PC with the Herd Management program before you go out so that the latest herd data is transferred to the Pocket PC. When you have finished a data entry session with the Pocket PC either return to the office to synchronise via cable link, or if you have a farm wireless network (Wi-fi) installed, synchronise the data from the cattle yard.



*myHerd data entry menu*



*myHerd in action*



#### Software Requirements

Pocket PC running Windows Mobile 2003 SE or Windows Mobile 5  
Desktop or Laptop PC running Windows XP

#### Pocket PC Hardware Requirements

64 MB SDRAM

## The Cow Overview Screen

Included in the **Dairy Starter** Package

Access: **Data Entry > Cows** from the Menu Bar

**Type in Brand number and press Enter**

**'Tabbed' page**

Ltn No	Start	End	Days	Total Yield	Fat Kg	Fat %	Protein Kg	Protein %	Cells	305 Yield	305 Fat Kg
3	20/01/2003		156	6186	217	3.51	188	3.04	211	6186	217
2	19/02/2002	22/11/2002	276	8132	272	3.34	239	2.94	111	8132	272

Date	Ltn No	Notes
25/03/2002	2	

Date	Ltn No	Sire	Straws Used	PD Result	Inseminator	Notes
01/04/2003	3	RUDOLPH	1	Positive	Bill Tate	
15/04/2002	2	LEADER	1	Positive		

Date	IdentityNumber	Group	Sex	Status	Breed	Type	Herd
20/01/2003	UKLK0030 249	NC	Male	Sold	FX	Calv	Dairy Herd
19/02/2002	UKLK0030 13		Male	Sold		Calv	Dairy

Date	Lactation	Notes
22/11/2002	2	
31/10/2001	1	

Date	Ltn No	Yield	Butterfat %	Protein %	Cell Count	Price/l
12/02/2003	3	43.70	4.92	3.50	0	22.000
08/02/2003	3	38.68	4.92	3.50	0	22.000
31/01/2003	3	39.03	4.92	3.50	0	22.000
21/11/2002	2	16.30	0.00	0.00	0	24.500
13/11/2002	2	17.80	0.00	0.00	0	0.000
08/11/2002	2	18.80	0.00	0.00	0	0.000

### Quickly access key data with Cow Overview

The Cow Overview screen presents in a concise format all the cow calendar and milking information for each dairy animal. Being able to view essential cow data in one place will save time during the day-to-day decision making process. Whenever you record information via other program screens, the Overview screen is automatically updated.

The top half of the window summarizes the current breeding and milking status. The lower half contains several "tabbed" pages, each displaying data for current and historical lactations in grid format. The records are ordered by date, with the most recent at the top for convenience. Click on each tab name to display the information. A right-mouse click within this screen will display a pop-up menu giving options to access further information about the current animal.

## 10 Orchid Dairy: Performance Monitoring

### Cell Count Contributions

You need the **Milk Recording Unit**

**Access:** Reports > Herd Management > Cell Count Contributions from the Menu Bar

A good Herd Management software package should allow you to monitor performance easily, identifying good and poor performing cows. Orchid Dairy will help you achieve this with the *Cell Count Contributions* report.

Current Milk Recording					Lactation To Date				
Brand Number	Lactation	Days In Milk	Yield	Exclude	Cell Count	Cell Count Contribution	Average Cell Count	No Tests	No Test Over
155	3	74	42.7	Excluded	1040	23.0	543	3	
27	9	242	20.9	Excluded	1500	16.6	695	8	
197	1	49	20.9		1093	12.2	1116	2	
140	5	106	33.3		517	9.2	498	4	
41	4	93	15.0		1037	8.3	300	4	
80	6	167	28.5		511	7.8	449	6	
39	4	26	44.2		190	4.5	190	1	
169	2	78	27.4		265	3.9	242	2	
193	4	127	34.3		200	3.7	310	4	

Milk Recording Date: 05/07/2003

Currently Recording: Cows with Cell Count & Yield > 0

Number of Cows	Bulk Tank Milk	Average Yield	Calculated Bulk Tank Cells
78	1870	24.0	120

Close

*Analysing data using Cell Count Contributions*

Select the required Milk Recording date (usually the most recent recording) from the drop-down box. The details of the recording will display in the grid. You can sort the grid in several ways; for example click the column heading "Brand Number" to sort into brand number order or click the Cell Count column heading to sort into cell count order.

As well as identifying poor performing individuals, you can experiment with different scenarios by excluding certain cows. Do this by double-clicking in the "Exclude" column on the relevant line(s). Observe the change on the data boxes at the bottom of the screen. You can easily see how to maximise bulk tank milk while keeping cells below your threshold. To Include an individual again, simply double-click on the "Excluded" text to clear the box.

**The Milk Yield Report**

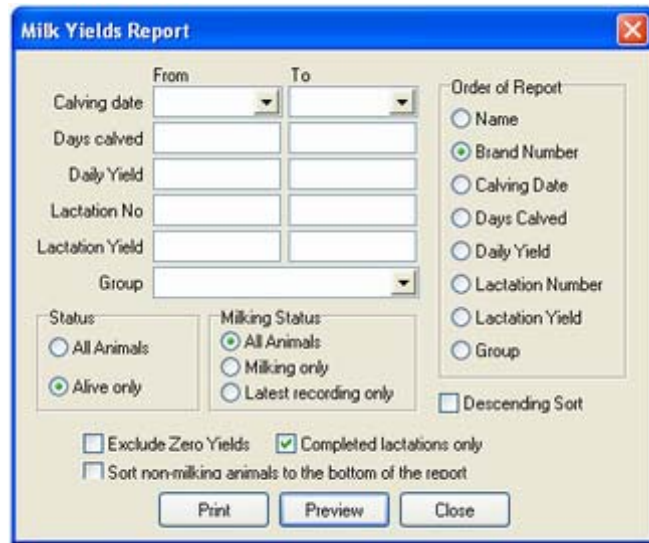
You need the **Milk Recording** Unit

**Access:** Reports > Herd Management > Milk Yields from the Menu Bar

There are two types of Milk Yields Report; a “portrait” report showing the latest recording or a comprehensive “landscape” view report. Select the Report Type by accessing the **Setup > Milk Recording** screen and clicking on the *Report* tab.

The Landscape Report allows you to define how the information is presented. This is achieved via a dialog screen where you specify the report parameters (shown opposite). Once this is done, click *Preview* to generate the report.

On the final page of the report, the lactation summaries are presented. These are illustrated below.



*Landscape Milk Yield Report Dialog Screen*

TOTAL LACTATION	305 DAY LACTATION	LATEST YIELD
Average Yield : 4393	Average Yield : 4342	Average Yield : 23
Weighted Average Butterfat : 4.03	Weighted Average Butterfat : 4.03	Weighted Average Butterfat : 4.47
Weighted Average Protein : 3.09	Weighted Average Protein : 3.09	Weighted Average Protein : 3.77
Weighted Average Cell Count : 207		Weighted Average Cell Count : 258
Cell Counts Over Limit : 22		Cell Counts Over Limit : 3
Average days lactating : 150		

*The last page of the report shows the Summaries*

Please note that to accurately judge lactation performance, the “Completed lactations only” check box should be ticked.

## 12 Orchid Dairy: Feeding

### Supplementary Feeding

You need the **Feeding** Unit

**Access:** Reports > Feeding > Current Variable Feed Settings from the Menu Bar

Review the current variable feed settings for all animal feed groups or one specific group. The report can be previewed first or printed directly.



### Current Variable Feeds

#### Dairy Herd

Brand No	Tag No	Name	Lact No	Days Served	Calving Date	Days Calved	Group	Feed	Latest Yield	Daily Ration
193	193	GOOSEGRASS 2	4	57	28/02/2003	151	Hi C	Classic Gold	34.3	7.7
194	194	LANDWHIN	1	0	20/05/2003	70	Hi C	Classic Gold	27.4	5.9
197	197	LACTUCA	1	0	17/05/2003	73	Hi C	Classic Gold	22.1	3.9
<b>Total Animals:-</b> 38			<b>Total Milk:-</b> 1061.7			<b>Average Milk:-</b> 27.9				
			<b>Total Feed:-</b> 213.7			<b>Average Feed:-</b> 5.6				

#### Variable Feed Settings Report

The Orchid feed unit provides the tools to define animal feed groups and fine-tune the calculation settings.

**Access:** Setup > Feed

Run the variable feed calculation when the latest yields have been updated...

**Access:** Data Entry > Feeding > Recalculate Feed Rations

You can then review and amend individual feed quantities on a grid, which also shows the latest yield and previous yields for each brand number.

**Access:** Data Entry > Feeding > Amend Variable Feeds

## The CTS Wizard

You need the **CTS Wizard** Unit

**Access:** [Data Entry](#) > [CTS Wizard](#) > [Open Wizard](#) from the Menu Bar

The CTS Wizard gives you the ability to electronically send passport applications and movement notifications to the BCMS. Unlike other CTS systems, there is no dual entry of data - enter a calving or movement record just once into Orchid and the animals are added to the Wizard list ready to be submitted.

The Wizard uses a new fast and secure BCMS system called “**CTS Web Services**”.

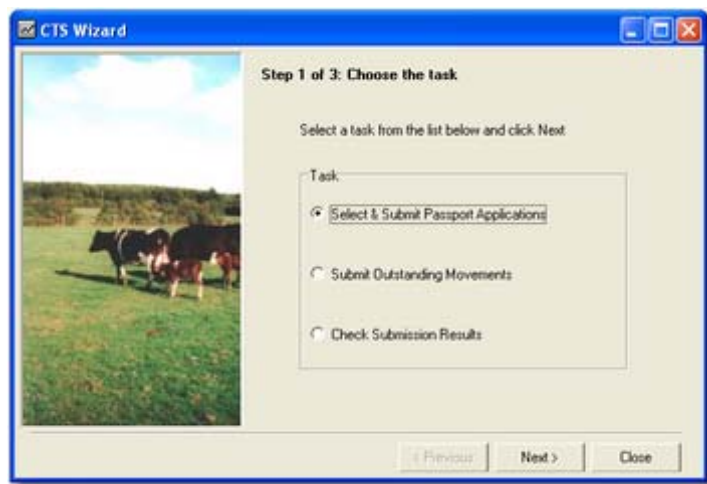
## How It Works

### Passports

When a new calf is entered into the Orchid program, it is automatically placed on the Wizard passport list.

Select the Wizard task “*Select & Submit Outstanding Passport Applications*”. The list of animal identities displays.

Tick the animals you wish to apply for and the Wizard will submit the information to the CTS Web Services via your Internet connection.



*Select the required task from the CTS Wizard*

### Movements

The movement book is automatically updated in Orchid whenever you move or sell an animal. These movements are also added to the Wizard list.

Simply select the task named “*Submit Outstanding Movements*” to view this list. The movement records can then be selected and submitted as above.

### Obtaining and Viewing Submission Results

**Access:** [Data Entry](#) > [CTS Wizard](#) > [CTS Submissions](#) from the Menu Bar.

When you submit a batch of passports or movements, the BCMS system will respond within a few seconds with a unique Receipt Number, which is stored in the Orchid program. All the batches that have been previously submitted can be viewed on one screen. These are colour-coded so that you know which are still pending (awaiting submission results).

After a short period of time, you need to use the third Wizard task to log-in again to the BCMS system to get the results of previous submissions. This will tell you whether all the information has been successfully validated and accepted by BCMS. Any animal records that have errors are shown in red so that you can correct the data and re-submit. If a batch contains a mistake, just that one mistake is returned to you, not the whole batch.

### NOTE:

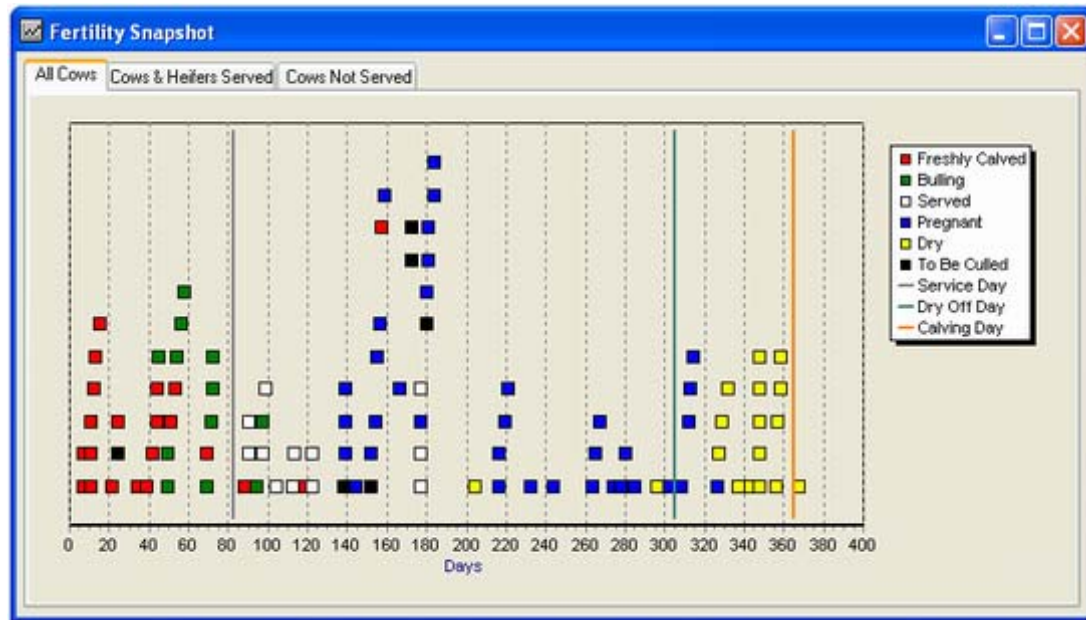
*You will need your CTS Online User Name and Password to submit information via the CTS Wizard. These log-in details are issued to all UK Cattle Keepers.*

## 14 Orchid Dairy: Herd Fertility

### Fertility Snapshot

You need the **Fertility** Unit

**Access:** Reports > Fertility > Fertility Snapshot from the Menu Bar



*The Fertility Snapshot works like an electronic breeding chart*

Each coloured square on the screen represents a brand number. Simply click on a square to see the details of that animal displayed on the *Cow Overview* screen. The pattern will keep shifting to the right of the screen as the days elapse. The colour-coding will allow you to instantly pick up on cows that have not been served by the Service Day.

Use the standard Windows *Maximise* button on the screen Title Bar to enlarge the view if you wish. You can also use your mouse to “drag” a portion of the screen for enlargement.

Click on the *Cows & Heifers Served* or the *Cows Not Served* “tabbed” pages to display further screens.

## Vet & Medicine Book

You need the **Veterinary** Unit

**Access:** Start > All Programs > Orchid Herd Management > Orchid AMS Vet Module or launch from the Windows Desktop<sup>®</sup> icon



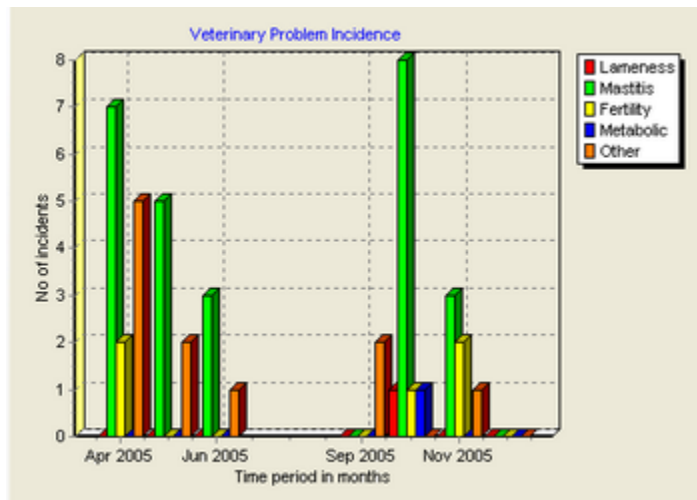
Desktop icon

## Reports for Farm Assurance

Rapid report generation for:  
Medicine Stocks, Medicine Purchases  
Animal Health Records.

Full range of record selection options  
for each report type.

Graphically view incidence of health  
problems groups over time.



Vet Analysis Report

## Comprehensive Data Recording

Enter medicine purchases, then treat animals using items In stock, so that individual treatments are linked to the correct medicine batch number.

- Pre-entered list of NOAH approved cattle medicines to help get you started quickly
- Single record or batch data entry of treatments
- Separate meat and milk withdrawal period calculations
- 7 day follow-up review warnings

[Refresh This Page](#)

There are **1** animals under treatment today

[Show Me](#)

There are **1** animals to be followed up this week

[Show Me](#)

There are no animals currently prohibited from adding milk to the bulk tank

There are no animals currently withdrawn from sale

Your Herd Health Today screen

- A summary of animals under treatment is shown when the Vet module opens (shown above)

### Data Exchange with Electronic Milking Parlours

You need the **Parlour Link** Unit and optionally the **Milk Recording** and **Feed** Units

Orchid supports a link to many of the electronic milking parlours working on UK farms. This will give you accurate, efficient and cost-effective milk recording and more. Please contact your Orchid Sales Advisor for further information on the link possibilities for your specific parlour type.

#### ***What is meant by the term “Parlour Link”?***

A parlour link is usually comprised of a software program, which handles the data exchange between the parlour Process Computer and a Management Program (Orchid Dairy). The link program is produced by the parlour manufacturer and usually conforms to a standard “language” for data exchange called the TAURUS Standard Interface.

The amount of data that can be exchanged is determined by the capability of the link program. Since Orchid Dairy is a full Management Information program, most of the data transfer will be from Orchid to the parlour.

In almost all cases, milk yields can be imported into Orchid from the parlour. With some parlour types, it is possible to use Orchid Dairy as a user interface to enter cow calendar dates into the parlour. These could include calving dates, service dates, and dry-off dates.

Additionally, where cows are fed in-parlour, an Orchid-calculated 24 hour feed ration can be sent to the parlour (the ration is calculated based on imported milk yield and requires the **Feed** Unit).

#### ***How does a Parlour link work in Orchid?***

First specify your Parlour Type and the hard disk location of the link program. This needs only to be done once. **Access: Setup > Milk Recording > Parlour Settings** from the Menu Bar.

#### ***Import Milk Yields***

**Access: Data Entry > Milk Recording > Create a new recording**

This function uses a Wizard (a series of steps) to allow easy importation of yields.

#### ***Update Events***

**Data Entry > Updates > Update parlour**

For updating cow calendar dates to the parlour, Orchid Dairy first produces a “Difference” report which allows you to first review the differing dates between Orchid and the Parlour before synchronising.

#### ***Update In-parlour Feeds***

**Data Entry > Feeding > Update Parlour with variable Feeds**



***Selecting a parlour recording from the Wizard***

First you will need to setup the feed calculation parameters in Orchid, import the milk yields and then calculate the 24 hour feed values. Finally run the update function to send the daily feed values to the parlour.

## Monitor Whole Herd Costs and Margins

You need the **Costings** Unit

**Access:** Start > Programs > Orchid Herd Management > Costings

This unit can prove invaluable when working with a consultant. Lactation data is shared from the main *Herd Management* program. Create your cost definitions, feeds and fertilizers under the **Setup** menu. Add a new month under the **Data Entry** menu and enter your monthly figures on the “tabbed” pages.

## Reporting

### Costings Trend Graphs

**Access:** Reports > Costings Trend Graphs

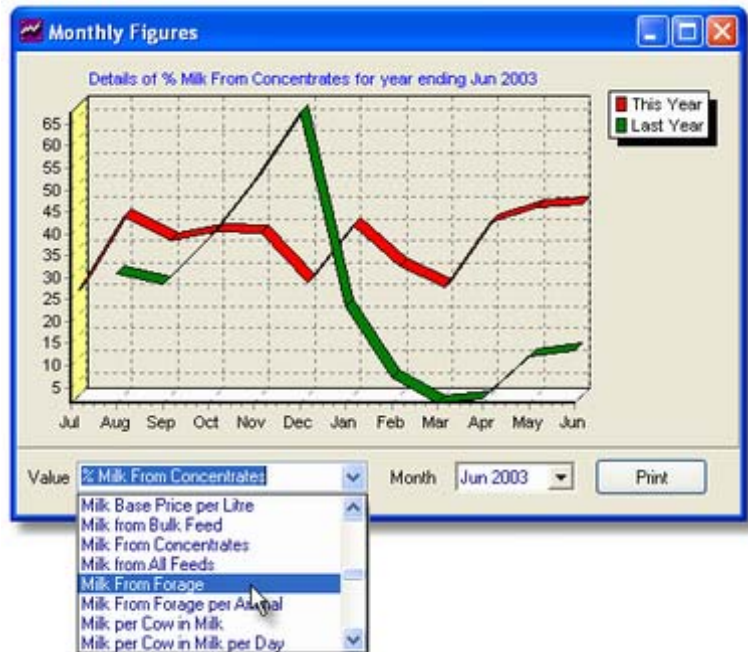
Check herd performance at a glance, and compare with last year. Individual graphs can be generated and printed (illustrated below). **Access:** Reports > Monthly Analysis

Other reports include:

**Detailed Monthly Reports**

**Monthly Costings**

**Simple Income Statement.**



*Select from over 70 graph types to display and print*

### Monthly Calving Group Summary

**Access:** Reports > Monthly Calving Group Summary

This screen is designed to let you quickly compare the most recent milk recording with the previous one, grouped by Month of Calving. The 3 “tabbed” pages include:

#### **Percentage Change**

This shows the percentage change of milk yields against the previous recording.

#### **Average Yields**

This shows the average yield of all cows still milking grouped by month of calving. It allows you to quickly see if you have a problem with falling milk yields.

#### **Animals In Milk**

This lists the number of animals that calved in each month that are still milking.

## 18 Orchid Dairy: Milk Prediction

### Predict and Monitor Milk Output

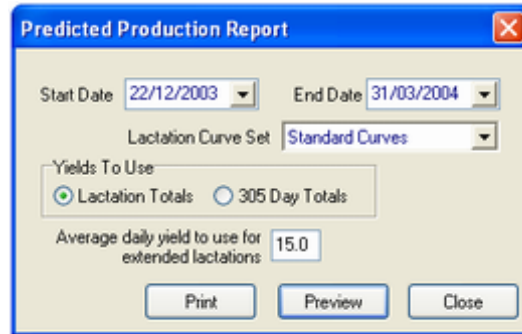
You need the **Quota Prediction** Unit and the **Costings** Unit

**Access:** Start > Programs > Orchid Herd Management > Quota Prediction from the Menu Bar

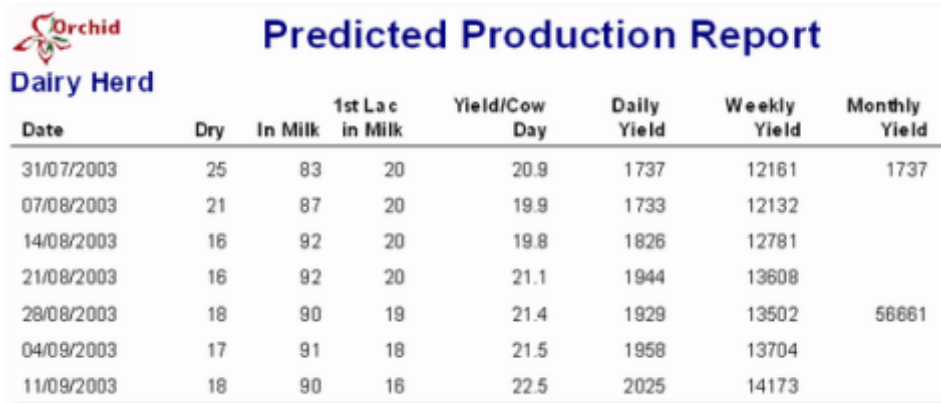
### The Predicted Production Report

**Access:** Predictions > Predicted Production Report

Daily production predictions in detail for your Herd...automatically. This report uses lactation records from the *Herd Management* program.



*Defining the prediction period*



Date	Dry	In Milk	1st Lac in Milk	Yield/Cow Day	Daily Yield	Weekly Yield	Monthly Yield
31/07/2003	25	83	20	20.9	1737	12161	1737
07/08/2003	21	87	20	19.9	1733	12132	
14/08/2003	16	92	20	19.8	1826	12781	
21/08/2003	16	92	20	21.1	1944	13608	
28/08/2003	18	90	19	21.4	1929	13502	56661
04/09/2003	17	91	18	21.5	1958	13704	
11/09/2003	18	90	16	22.5	2025	14173	

*Preview and print the prediction details*

### Quota Prediction

**Access:** Predictions > Quota Prediction

This method of prediction requires certain data to be entered before the calculations can be done. You can define parameters that are used in the prediction; for example, the number of cows calving in each month. After the prediction is updated, graphs are displayed for Monthly and Cumulative Values through the quota year.



The Orchid Dairy package that you select is built out of *Units*. Choose a combination to suit your enterprise.



FREE data conversion by Orchid Support from Datastream or CTS format:

- Save hours of initial data-entry work
- Integrity checking before the data is dispatched to you
- Get animal identity lists from the program immediately

## Your Software Package

All Orchid Dairy packages are built around the Dairy Starter Unit giving you a comprehensive Management Information System that locks together and shares information automatically. Data only has to be entered once to update all functions giving you incredible insight into problems and areas where improvements can be made.

### Additional Herds

If your business is made up of more than one herd, each one can be managed completely separately within the Orchid software. An extra Unit is required for each additional herd.

### Additional Computer Licences

If there is a need to run Orchid on more than one computer, an additional Unit will be required for each machine.

## Package Options

Orchid Data offer a choice of 3 Packages that offer significant financial savings (please refer to the separate charge sheet enclosed with this brochure).

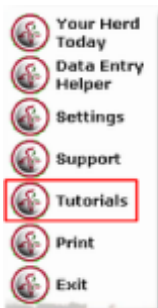
- ◆ **Orchid Dairy Starter**  
(enterprise monitoring plus DEFRA legislation)
  - For 1 herd on 1 computer (equates to 4 Units)
- ◆ **Orchid Dairy Manager**
  - Dairy Starter + any 6 additional units.
- ◆ **Orchid Dairy Enterprise**
  - Dairy Starter + any 16 additional units.

The Orchid Dairy Charge:

- ⇒ Is payable monthly by Direct Debit.
- ⇒ Includes all on-line support and telephone support
- ⇒ Includes software upgrades

For further information and advice on Unit selection, please call Orchid Sales on 01536 443400 or Email [info@orchid-data.co.uk](mailto:info@orchid-data.co.uk)

### **Exploring Further**



We hope this brochure has demonstrated how Orchid Dairy can benefit your business. To explore the software further, please make use of the program Tutorials. These can be opened by clicking the “Tutorials” button from the *Your Herd Today* main menu (shown opposite).

The Tutorial index page will display. Simply scroll down the list and click on a title to view the tutorial. Scroll to the end of the tutorial and click “Print Tutorial” to make a hard copy or click “Back” to return to the Index.

#### **Note:**

*When a trial period expires before the licence is issued, the software will revert to “view data only” - this means you will not be able to enter and save data. Once the licence is installed, you will be able to record new information again.*

### **How do I start my Orchid Dairy subscription?**

1. Complete the *Orchid Dairy Order* form
2. Complete the *Direct Debit Mandate* form
3. Return both forms to Orchid Data in the envelope provided

An Orchid Sales Adviser will be pleased to help select the package of software units that best meets your needs. Please also advise us whether you would like Orchid-format data to be created from your own electronic data source (e.g. datastream file).

Once the Direct Debit is in place, your software licence will be made available. If your PC has an Internet connection, the licence will only take a few seconds to download via the *Orchid Internet Support* program. Please refer to *page 20* of this brochure for detailed instructions on how to do this.

If you do not yet have an Internet connection, your licence can be sent by post on floppy diskette.

The Orchid software will run unrestricted for 10 days after initial installation on your computer. After this time you will need to install an Orchid software licence on your computer, so that you can continue entering and saving data. A licence holds the number of units that will be available on your computer. For example, a unit package could be a combination of Dairy Starter plus the Veterinary unit, Milk Recording unit and one unit for an additional computer.

To download a licence, proceed as follows:

1. Double-click the Orchid Internet Support icon on the Windows desktop.



2. If you have not downloaded a licence before, the Welcome screen will display. Click the button to *Start Online Support*. The main menu screen will display.



**Start Online Support**

3. Click the button to obtain a licence. The licence screen displays



**Obtain a licence to use the Orchid programs**

4. Click the button to download a licence for this computer. The log-in dialog window displays.



**Download a Licence for this computer**

5. Type in your unique User ID and Password, which is supplied by your Orchid Sales Adviser. When you have done this click *OK*.

Support Server LogIn Details

User ID: RANDS  
 Password: \*\*\*\*\*

OK Cancel

6. If you are connected to the Internet already, the licence download will proceed, otherwise you will see your default Windows® dial-up connection display; if the latter is the case click on *Connect*.

Dial-up Connection

Select the service you want to connect to, and then enter your user name and password.

Connect to: ntworld  
 User name: hfdalvesta  
 Password: \*\*\*\*\*

Save password  
 Connect automatically

Connect Settings... Cancel

Dialing...08005190100  
 Dialing attempt 1.  
 Dialing...

7. Once your computer is connected to the Internet and logs in to the Orchid Support Server, a confirmation message will display to confirm that the licence has been successfully downloaded.

Orchid Support via the Inte...

A Licence key file has been downloaded.  
 This licence expires on 05/01/2004

OK